

SPECIFICATIONS

Model	LN-150	Model	LN-150
Measuring Range Distance Vertical Range	0.9 - 130m *1 +55° to -30°	Communication	W-LAN 802.11 n/b/g, 100m Bluetooth Class 1, Usable range: to 130m **2,3
		Power Supply Standard battery Operating time	BDC72 lithium-ion battery Approx. 5 hours (continuous use, at 20 C)
Measurement Accuracy	Distance accuracy: (3.0 + 2ppm X D)mm	Dimension	185 (W) x 198 (D) x 322 (H)mm
Auto Leveling Leveling Range	+/- 3 degree	Weight	Approx. 4 kg (including battery BDC72)
Inclination Compensation Method Working Range	Hydraulic dual-axis inclination sensors +/- 6'	Environmental resistance Operating temperature Storage temperature	-20 - + 50 °C (no condensation) -30 - + 60°C (no condensation)
		Dustproof/Waterproof	IP65
Motor Motion Range Maximum Rotation Speed	360° (Horizontal) 60° / second (10 rpm)	Note: *1 When prism ATP2 or ATP2S is used. Ambient condition: not under severe weather of Rain/Fog/Heat Shimmer *2 No obstacles, few vehicles or sources of radio emissions/interference in the near vicinity of the instrument, no rain *3 Usage range could be shorter depending on specifications of Bluetooth device to communicate.	
Guide Light Light Source Visible Range	LED (Red 626nm/ Green 524nm) Horizontal > 8° (7m@50m distance)		
		Laser Plummet Light Source	Light source: Laser diode (Class 2) LED 635nm



Standard Components

- LN-150
- Battery BDC72 2 pieces
- Battery Charger CDC77
- Power cable
- Wiping cloth
- Instruction Manual : Read this first (This sheet)
- Laser caution sign-board
- Carrying case
- Export restrictions card (Be sure to read)

Accessories (optional accessories)



360° Prism ATP2

360° Sliding Prism ATP2SII

Pin Pole PP4

Foot Shoe AP66

Hand Grip SB190



TOPCON CORPORATION

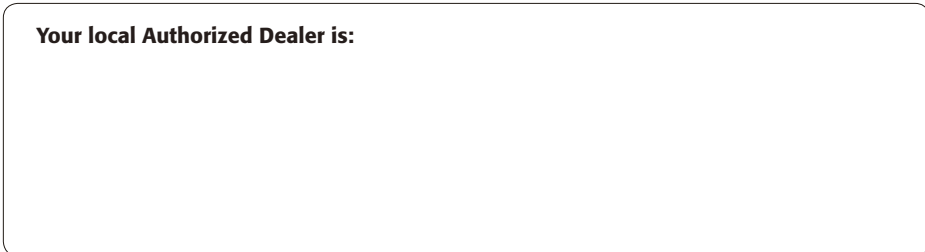
75-1 Hasunuma-cho, Itabashi-ku, Tokyo 174-8580, Japan
www.topcon.co.jp

< Contact to >

Topcon Positioning Asia (Thailand) Co., Ltd.
77/164 Sinnsathorn Tower, 37th Floor, Krungthongburi Rd.,
Klongtongsa, Klongsarn, Bangkok 10600, Thailand
Phone : +66-2- 440-0721/0722 Fax : +66-2- 440-0723

- Specifications may vary by region and are subject to change without notice.
- Bluetooth® word mark and logos are registered trademarks owned by Bluetooth SIG, Inc. and any use of such marks by Topcon is under license.
- Other trademarks and trade names are those of their respective owners.

Your local Authorized Dealer is:



LN-150

Layout Navigator



Our Best Buddy!



Easy, Speedy and Convenient The Ultimate Solution for Stake-out Work

- Small & Light weight
- Easy Installation
- Brightness & Visible guide light for guidance
- Operated by mobile phone and tablet
- Ultra-high speed & Quick response

LN-150 Solution

Upgrade Stake-out Work!



No Need!
Leveling & Plummet

Manual TS

New Style
Self Leveling



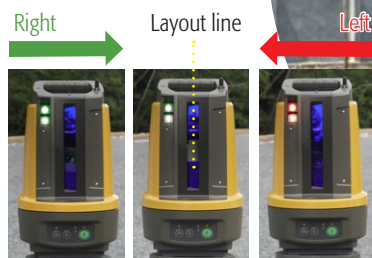
Easy one-button self-leveling setup.
No need to check the bubble level
for the installation.



No Need!
H angle adjustment & Focusing

Manual TS

New Style
**Self Turning &
Guide Light**



After identifying the stake-out point, Layout
Navigator will guide you in the rough
direction with guide light.



No Need!
V angle adjustment & Guiding

Manual TS

New Style
No Telescope



The Layout Navigator automatically
turns and faces to the next stakeout
point with the touch on your
mobile phone.



LN changes your stake-out work!
Let's find your survey way!



Which type suits you?

LN-150



**LN-150
without Person**

3 Major Benefits

1. Speed up your stake-out work
2. Reach stake-out point by yourself
3. Need less manpower



**LN-150
with Person**

3 Major Benefits

1. No change of team structure
2. No need to look in telescope
3. Easy to guide prism



Type1 Time Reduction

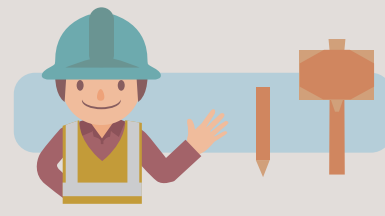
Reduce waste of time of surveyor and assistant significantly.
Reduce Stake-out work time 50%.



LN-150



Prism, Smart phone

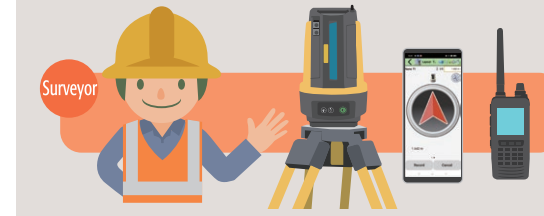


Stakes, Hammer, Color spray etc.



Type4 No Eye Fatigue (2 Assistants)

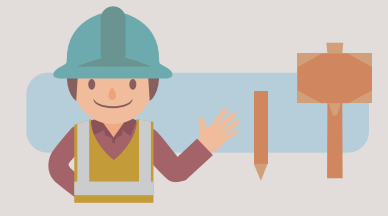
No need to look in telescope.
Guide prism following direction on your smart phone.
The more workers you have, the faster your work done.



LN-150, Smart phone, Walky-talky



Prism, Walky-talky



Stakes, Hammer, Color spray etc.

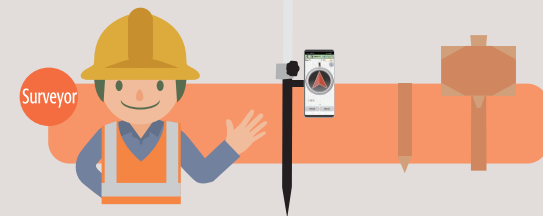


Type2 Labor Cost Reduction

One-man operation.
Best solution for labor shortage.



LN-150



Prism, Smart phone, Stakes, Hammer, Color spray etc.

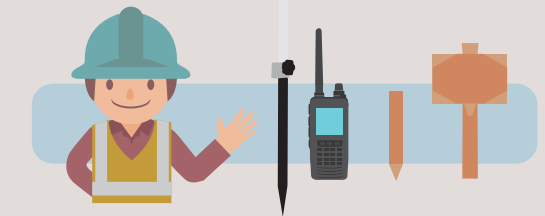


Type5 No Eye Fatigue (1 Assistant)

No need to look in telescope.
Guide prism following direction on your smart phone.



LN-150, Smart phone, Walky-talky



Walky-talky, Stakes, Hammer, Color spray etc.



Type3 Guidance from Anywhere

Always supervise prism position nearby prism.



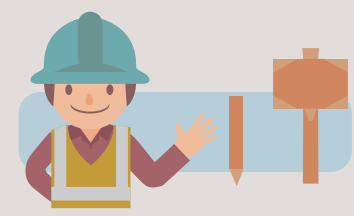
LN-150



Prism



Smart phone



Stakes, Hammer, Color spray etc.

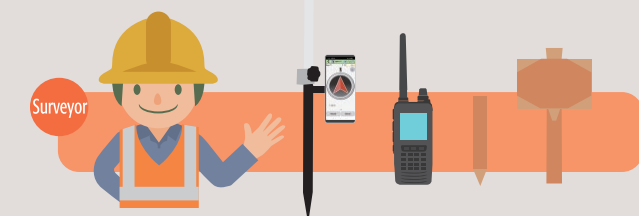


Type6 Anyone Near-by LN= Labor Cost Reduction

Put anybody near LN to secure instrument.



LN-150, Watchkeeper



Prism, Smart phone, Stakes, Hammer, Color spray etc.

User Voice

LN-150



KRIANGKRAI SURVEYING CO., LTD.

For more information
Please click here.



Reduce 50 % of Work Time

Why did you choose the LN?

1. Duration of stakeout of 50 points reduced from 2-3 hours to 1 hour
2. Don't have to look in telescope
3. Accuracy is the same with 5 seconds total station

How much did productivity increased?

1. Reduced communication time between instrument side and prism side
2. Reduce waiting time of people at the prism side to get instruct from the instrument side
3. Reduce labor with one-man operation

What is your Return on Investment (ROI)?

1. We paid off after just 2 months. Work time reduction contributed to our profit margin was a lot



Simgeum-a Construction Co., Ltd.

For more information
Please click here.



What part of LN do you find attractive?

What part of LN do you find attractive?

1. Reduce the labor costs by one-man surveying.
2. Convenient and efficient to operate the equipment because it can be automatically leveled and tracked.
3. Checking the exact location in real time

How much did productivity increased?

1. The overall speed of the operation was five times faster.

Which site is suitable to use LN?

1. It is suitable to use for construction site.



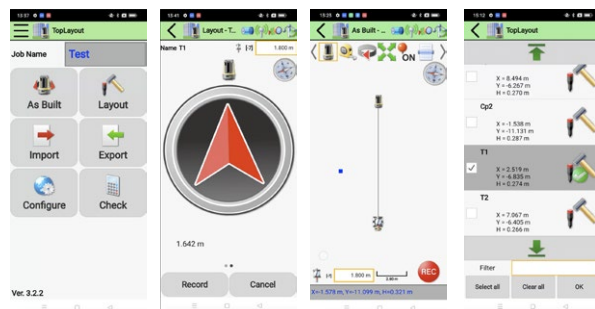
Multiple software options for productive stake-out



TopLayout

Basic 3D design data stake-out and topo application.

Freeware downloadable from [Google Play!](#)



MAGNET Construct

3D LAYOUT IN THE PALM OF YOUR HAND

- Mobile app for Android and iOS handheld devices
- Built to control robotic total stations, GNSS receivers and Layout navigator
- Longlink technology for a GNSS rover and base connection
- Simple, easy-to-use interface
- Change language and terminology within seconds
- Share files directly via email or through MAGNET Enterprise
- Secure data transfer, both to and from the field



Jobsite Application

Civil Engineering



80% of surveying work at jobsite is Stake-out

Building Construction



Minimize numbers of instrument setups

Solar Panel installation



Survey knowledge doesn't matter