



Standard Components

- LN-60
- Battery BDC72 2 pieces
- Battery charger CDC77
- Power cable EDC113A/113C etc.
- Wiping cloth
- Instruction manual : Read this first
- Laser caution sign-board
- Carrying case
- Carrying strap
- 360° prism kit
- Export restrictions card (Be sure to read)

Accessories (optional accessories)



360° Prism ATP2



Hand grip SB190



Candy mirror CM-7PPO



360° Prism protector ATP guard



Backpack SC251

SPECIFICATIONS	
Model	LN-60
Measuring range	
Distance	0.9 to 130m ^{*1} (When using ATP2/ATP2SII) 0.9 to 50m ^{*1} (When using CM-7PPO)
Vertical angle	+55° to -32°
Measurement accuracy	Distance accuracy: (3.0 + 2ppm X D)mm ^{*2*3} Angle accuracy: 5"
Self-leveling	
Leveling range	± 3°
Inclination compensation	Hydraulic dual-axis inclination
Method	Hydraulic dual-axis inclination sensors
Compensation range	± 6'
Motor	
Motion range	360° (Horizontal)
Maximum rotation Speed	60° / second (10 rpm)
Guide light	
Light source	LED (Red 626nm/ Green 524nm)
Visible range	Horizontal > 8° (7m@50m distance)
Communication	
Wireless LAN	Supports 802.11 n/b/g
Communication distance	100m
Bluetooth	Version Bluetooth 5.0
Power class	Class 1.5
Usable range	to 130m ^{*4*5}
Power supply	
Power source	Rechargeable Li-ion battery BDC72
Operating time	Approx. 6 hours (continuous use, at 20°C)
Dimensions	185 (W) x 198 (D) x 322 (H)mm
Weight (including battery)	Approx. 4.0 kg
Environmental resistance	
Operating temperature	-20 to + 50 °C (no condensation)
Storage temperature	-30 to + 60 °C (no condensation)
Dustproof/Waterproof	IP65
Software	Toplayout (Android Device only)

*1: Weather conditions for measurement: Other than bad weather, such as rain, dense fog, and strong heat haze.
 *2: Figures will change depending on the weather conditions and location conditions. Figures when both the elevation and depression angles of the laser beam are within 15° and the instrument is facing the 360° Prism.
 *3: D: Measurement distance; Unit: mm
 *4: Paired with designated controllers, with instrument height to be more than 1.5m, no obstacles (like building structures, trees or vehicles) causing interrupting/reflecting radio wave, few sources of radio emissions/interference in the near vicinity of the instrument, no rain.
 *5: Usage range could be shorter depending on specifications of Bluetooth device to communicate.

- LN-60 is only available for Asian region.
 - Specifications may vary by region and are subject to change without notice.
 - Bluetooth® word mark and logos are registered trademarks owned by Bluetooth SIG, Inc. and any use of such marks by Topcon is under license.
 - Other trademarks and trade names are those of their respective owners.

Your local Authorized Dealer is:



TOPCON CORPORATION

75-1 Hasunuma-cho, Itabashi-ku, Tokyo 174-8580, Japan
www.topcon.co.jp

< Contact to >

TOPCON POSITIONING ASIA (MALAYSIA) SDN. BHD.

Registration No. 201901043929 (1353259-V)
 No. 6, Jalan Pensyarah U1/28,
 Hicom-Glenmarie Industrial Park,
 40150 Shah Alam, Selangor Darul Ehsan
 Email: mys_survey_sales@topcon.com
<https://www.topconpositioning.asia/sa/en>

LN Solution

Layout Navigator



Easy, Speedy and Convenient The Ultimate Solution for Stake-out Work

- Easy instrument set up with Self-leveling
- Expanded range of measurement!
Even sharp inclines are handled with ease
- Reduce working hours
- Easy guidance
- Android device as controller

LN-60 Solution

Upgrade Stake-out Work!



No Need!
Leveling & Plummet

Manual TS

New Style
Self Leveling



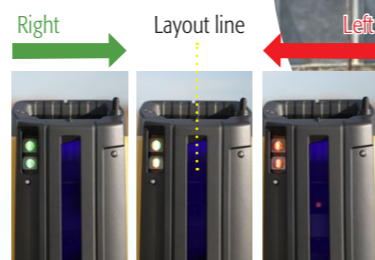
Easy one-button self-leveling setup.
No need to check the bubble level for the installation.



No Need!
H angle adjustment & Focusing

Manual TS

New Style
Self Turning & Guide Light



After identifying the stake-out point, Layout Navigator will guide you in the rough direction with guide light.



No Need!
V angle adjustment & Guiding

Manual TS

New Style
No Telescope



The Layout Navigator automatically turns and faces to the next stakeout point with the touch on your mobile phone.



LN changes your stake-out work!
Let's find your survey way!



Which type suits you?

LN-60



**LN-60
without Person**

3 Major Benefits

1. Speed up your stake-out work
2. Reach stake-out point by yourself
3. Need less manpower



**LN-60
with Person**

3 Major Benefits

1. No change of team structure
2. No need to look in telescope
3. Easy to guide prism



Type1 Time Reduction

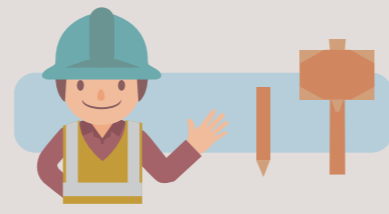
Reduce waste of time of surveyor and assistant significantly.
Reduce Stake-out work time 50%.



LN-60



Prism, Smart phone



Stakes, Hammer, Color spray etc.



Type4 No Eye Fatigue (2 Assistants)

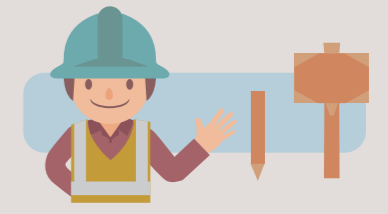
No need to look in telescope.
Guide prism following direction on your smart phone.
The more workers you have, the faster your work done.



LN-60, Smart phone, Walky-talky



Prism, Walky-talky



Stakes, Hammer, Color spray etc.

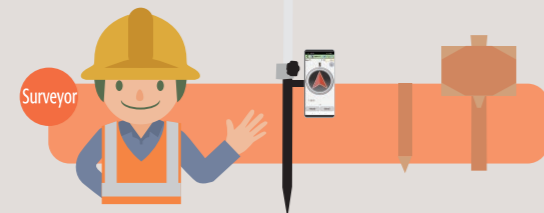


Type2 Labor Cost Reduction

One-man operation.
Best solution for labor shortage.



LN-60



Prism, Smart phone, Stakes, Hammer, Color spray etc.

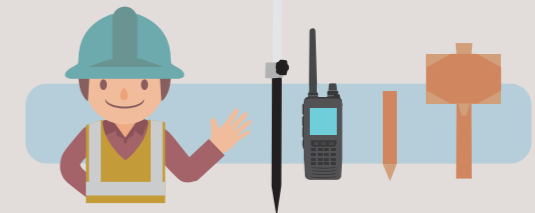


Type5 No Eye Fatigue (1 Assistant)

No need to look in telescope.
Guide prism following direction on your smart phone.



LN-60, Smart phone, Walky-talky



Walky-talky, Stakes, Hammer, Color spray etc.



Type3 Guidance from Anywhere

Always supervise prism position nearby prism.



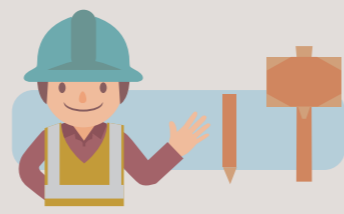
LN-60



Prism



Smart phone



Stakes, Hammer, Color spray etc.

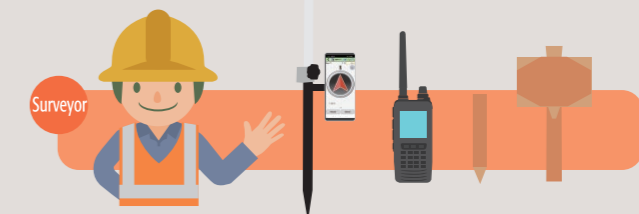


Type6 Anyone Near-by LN= Labor Cost Reduction

Put anybody near LN to secure instrument.



LN-60, Watchkeeper



Prism, Smart phone, Stakes, Hammer, Color spray etc.

User Voice

LN-60



KRIANGKRAI SURVEYING CO., LTD.

For more information
Please click here.



Reduce 50 % of Work Time

Why did you choose the LN?

1. Duration of stakeout of 50 points reduced from 2-3 hours to 1 hour
2. Don't have to look in telescope
3. Accuracy is the same with 5 seconds total station

How much did productivity increased?

1. Reduced communication time between instrument side and prism side
2. Reduce waiting time of people at the prism side to get instruct from the instrument side
3. Reduce labor with one-man operation

What is your Return on Investment (ROI)?

1. We paid off after just 2 months. Work time reduction contributed to our profit margin was a lot



Simgeum-a Construction Co., Ltd.

For more information
Please click here.



What part of LN do you find attractive?

What part of LN do you find attractive?

1. Reduce the labor costs by one-man surveying.
2. Convenient and efficient to operate the equipment because it can be automatically leveled and tracked.
3. Checking the exact location in real time

How much did productivity increased?

1. The overall speed of the operation was five times faster.

Which site is suitable to use LN?

1. It is suitable to use for construction site.

LN Series has tripled the efficiency of stake-out operations!

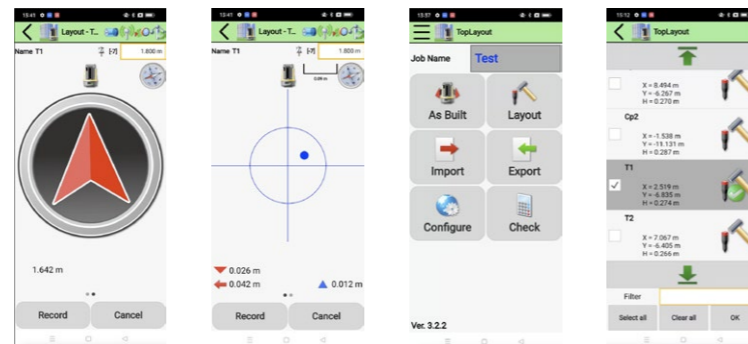


Multiple software options for productive stake-out

Control Software for Android Device, "TopLayout"



A free software, downloadable from Google Play, controls Instrument orientation measurement, Topographic measurement, Layout operation/guidance, data transfer.



Jobsite Application

Civil Engineering



80% of surveying work at jobsite is Stake-out

Building Construction



Minimize numbers of instrument setups

Solar Panel installation



Survey knowledge doesn't matter