



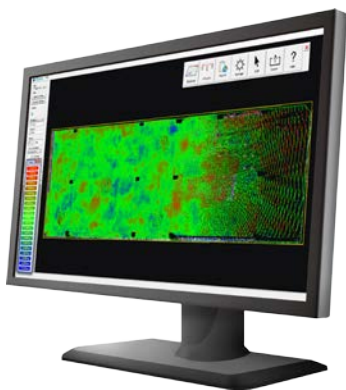
**CLEAREDGE<sup>3D</sup>**



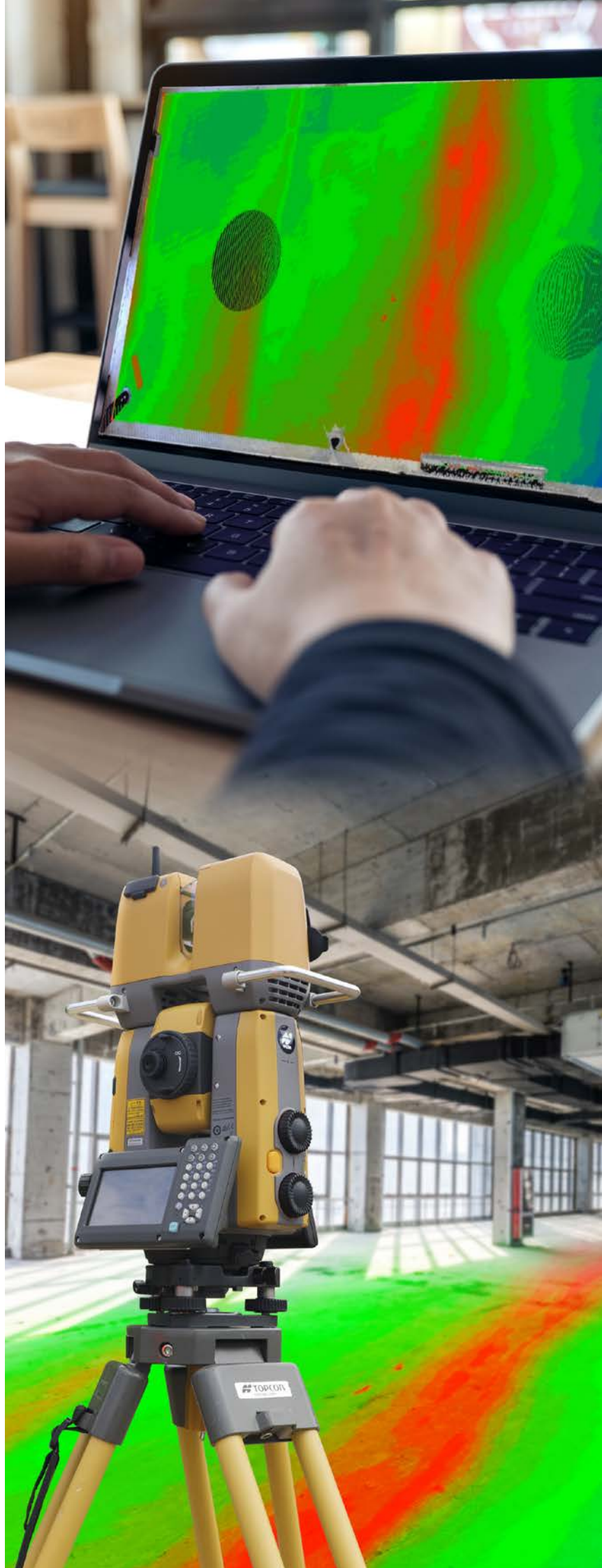
**Floor Flatness and Levelness Analysis Software**

## Efficiently Analyze Floor Flatness and Levelness Using Point Cloud Data

- FFL analysis of floors and walls
- Conduct FFL analysis while concrete is still workable
- Conduct beam camber analysis
- Non-contact inspection using point cloud data from laser scanner
- Analysis results shown in heatmap, contour map, and grid format
- Visualization of work and improved quality
- Add-on software to Autodesk Navisworks



Produces ASTM E1155 compliant reports  
(American Society for Testing and Materials)





# Easy Inspection of Floor Flatness and Levelness from Point Cloud Data

3D Scan



**3D Laser Scanner GLS-2200**      **Laser Scanner Total Station GTL-1000**

Scan the finished concrete surface using 3D survey equipment.

Process Point Cloud Data

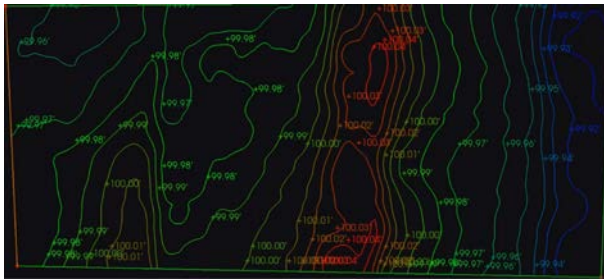


Create point cloud data using processing software MAGNET Collage.

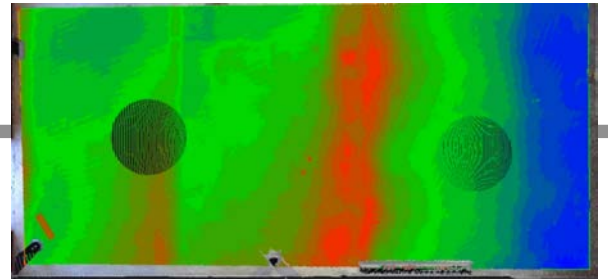
Analyze FFL



Analyze FFL using point cloud data.



Create contour maps and export in DXF format



Visualize FFL using Heatmap feature

## Analyze While Concrete is Still Workable

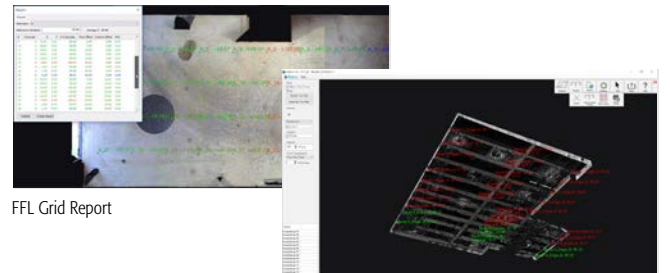
With Rithm, you will be able to conduct FFL analysis before concrete dries, allowing swift identification of problems and necessary response. This can lead to elimination of re-work, and save costs.

## Visualize FFL Results, Improve Quality

Simply scan floor slabs or walls and load the point cloud into Rithm, and get contour map, heatmap, and grid results showing deviations from the intended flat surface. This visualization makes it easier to share results with stakeholders.

## Add-On Software to Autodesk Navisworks

Rithm is directly integrated with Autodesk Navisworks, a well-known software in the industry.



FFL Grid Report

Beam Camber Analysis

## Operating Environment

OS	Microsoft® Windows® 10,8.1,8 (64bit),7(64bit SP1) Home Basic, Home Premium, Professional, Enterprise, Ultimate (recommended)
CPU	Intel® Core i7 - 8700K or AMD Ryzen 7 1700x 3.8 GHz or higher (with SSE2)
RAM	16 GB or more
Graphics card	Nvidia GTX 1050 or more

Navisworks Simulate or Manage is necessary. \*Rithm will not work on Navisworks Freedom.



**TOPCON CORPORATION**

75-1 Hasunuma-cho, Itabashi-ku, Tokyo 174-8580, Japan  
Phone: (+81)3-3558-2993 Fax: (+81)3-3960-4214  
www.topcon.co.jp

- Specifications may vary by region and are subject to change without notice.
- Bluetooth® word mark and logos are registered trademarks owned by Bluetooth SIG, Inc. and any use of such marks by Topcon is under license.
- Other trademarks and trade names are those of their respective owners.

**Your Local Authorized Dealer is:**