



[JMS Geomatics Mayerle Manager
Sokkia Korea Manager Lim Jeong-taek]



The Presidents Cup 2015

Jack Nicklaus GC Korea / Songdo IBD, Incheon City, Korea

For the first time in Asia, the President's Cup was held at the Jack Nicklaus Golf Club in Incheon, South Korea.

Prior to this, mapping of the Jack Nicklaus Golf Club was conducted by American and British surveying companies to ensure smooth operation of the tournament and players' play.

Manager Joe Mayerle of "JMS Geomatics, Inc" in the United States drew the entire course, and Graeme Heinrich of Heinrich GOLF did the detailed measurement of the greens.

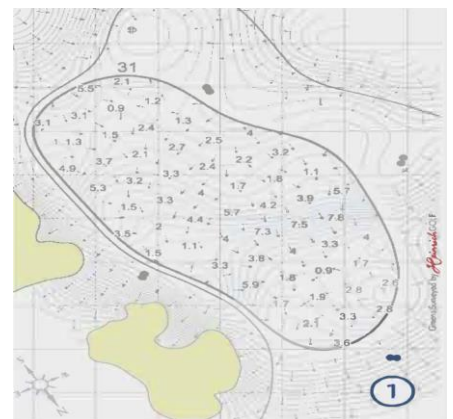
While looking for a surveying company to comply with Korean RTK surveying regulations, we requested cooperation from TOPCON's local subsidiary, Sokkia Korea, and Sokkia Korea came to support the GRX2 model among GPS equipment.

To measure the streamlined golf course, the survey was conducted using a specially designed wheel-type pole.

In this survey, which was conducted over a four-day schedule, GRX2 used the Radio RTK method, and the team was satisfied with the performance of the equipment as it provided a seamless work environment throughout the work.



[Manager Mayerle surveying]



[Data processed mapping operation]

Afterwards, prior to the opening of the tournament, "HeinrichGolf," a British golf company, additionally conducted precise measurement work on the green, and the measurement work was completed with the additionally introduced GRX2 with the training and support of Manager Lim Jeong-taek of Sokkia Korea. Manager Graeme Heinrich, who was in charge of the survey, expressed his gratitude to Sokkia and Manager Lim Jeong-taek, saying, "Thanks to Manager Lim Jeong-taek, we were able to conduct the survey and data processing smoothly. I am grateful for the generous support."

Thanks to this preliminary survey work, the Presidents Cup was held for the first time in Asia.

2015 was successfully held from October 6th to 11th.



[JMS Geomatics Mayerle Manager]

In particular, Manager Mayerle said, "When setting up equipment, all settings are completed with a single touch. It's really simple." He did not hold back in praising the equipment, and Director Jeon Sang-gu expressed his confidence in the equipment, saying, "GRX2 is a high-quality product that was used in the Korea National Land Information Corporation."